

# **MAGIKIST**

---

# **MAGIKIST**



Full 360° movement for car wash and industrial use.

Spring design provides flexible downward movement to reduce accidental damage.

Dual sealed ball bearings never need lubricating.

Hose is concealed in boom arm for clean appearance.

Rated for working pressures up to 3000 psi.

Flush ceiling mount.

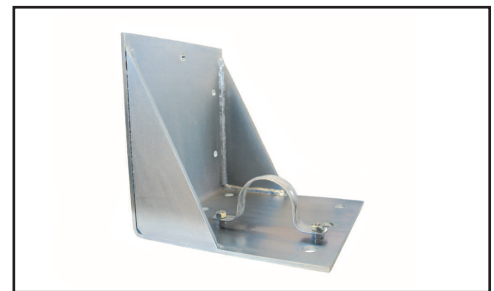
High pressure brass and stainless steel swivel is easily serviceable.

Standard with 1/4" FNPT connection at end for hose connection.

Standard model (OB0) is 69" long (from swivel to end of boom).

Available also in 7'9" (OB0-7) and 8'9" (OB0-8) lengths with extra support bar.

Converts to 180° wall mount boom with the use of the optional OB35 wall bracket.



## **CEILING & WALL**

---

# **OVERHEAD BOOM**